

# Manual Activation of Statgraphics *Sigma express*

If STATGRAPHICS Sigma *express* does not appear automatically on the Excel menu after it is installed, you can activate it manually. The method depends on your version of Microsoft Excel:

[Instructions for Excel 2003](#)

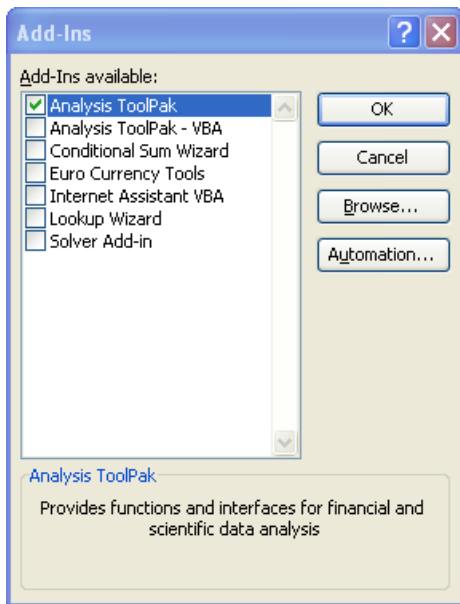
[Instructions for Excel 2007](#)

[Instructions for Excel 2010, 2013 and 2016](#)

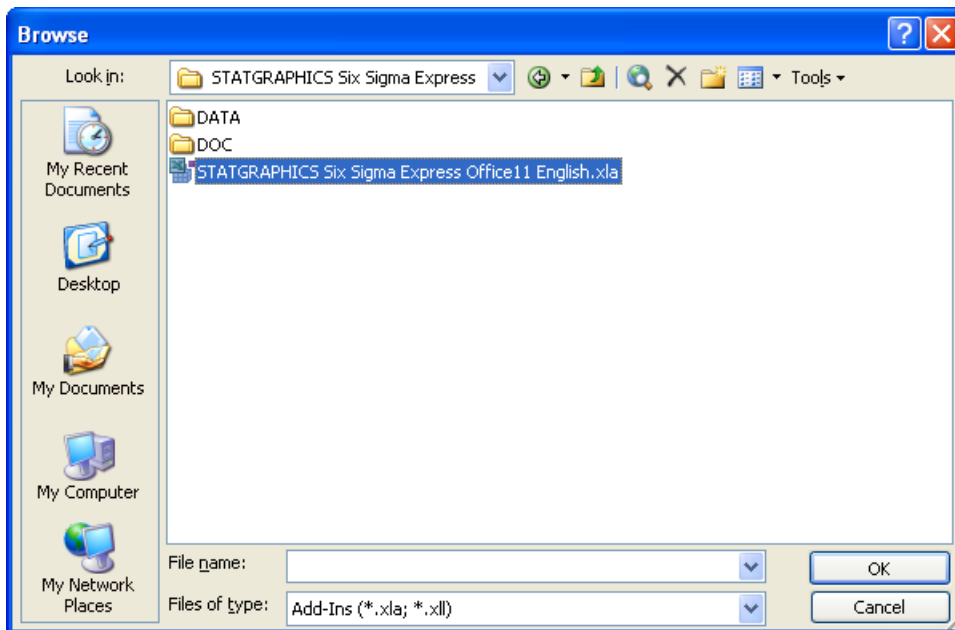
## Instructions for Excel 2003

If you are using Excel 2003, first start Excel. Then:

1. Select *Tools - Add-Ins* from the Excel menu. This will display a list of all current add-ins:

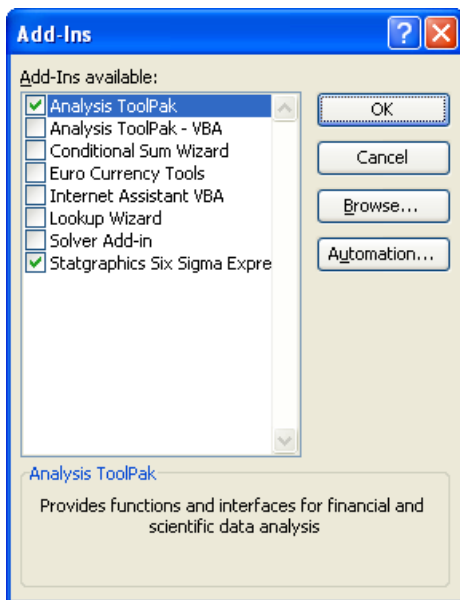


2. Press *Browse* to display a file selection dialog box:



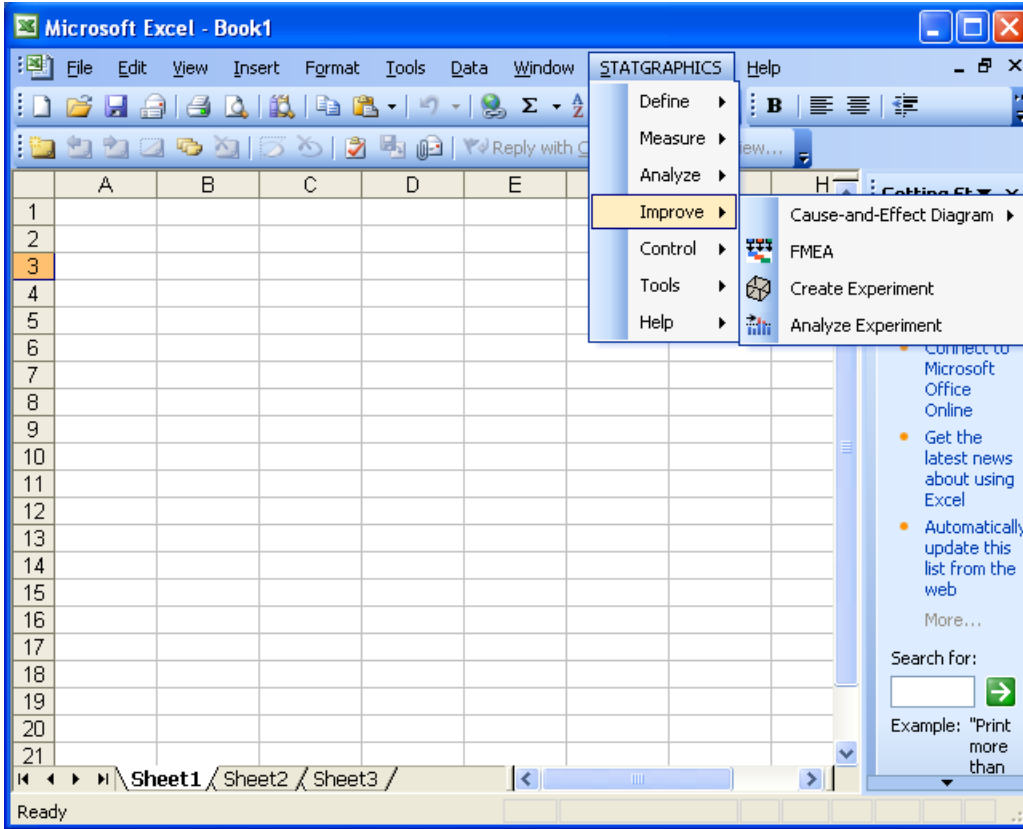
Locate the XLA file that was created when you installed STATGRAPHICS Sigma *express*. If you are using a 32-bit version of Windows, the file will usually be located in the directory named "c:\Program Files\Statgraphics\STATGRAPHICS Sigma *express*". If you are using a 64-bit version of Windows, the file will usually be located in the directory named "c:\Program Files (x32)\Statgraphics\STATGRAPHICS Sigma *express*".

3. When you press OK, STATGRAPHICS will be added to the list of add-ins:



Be sure that it has a checkmark next to it.

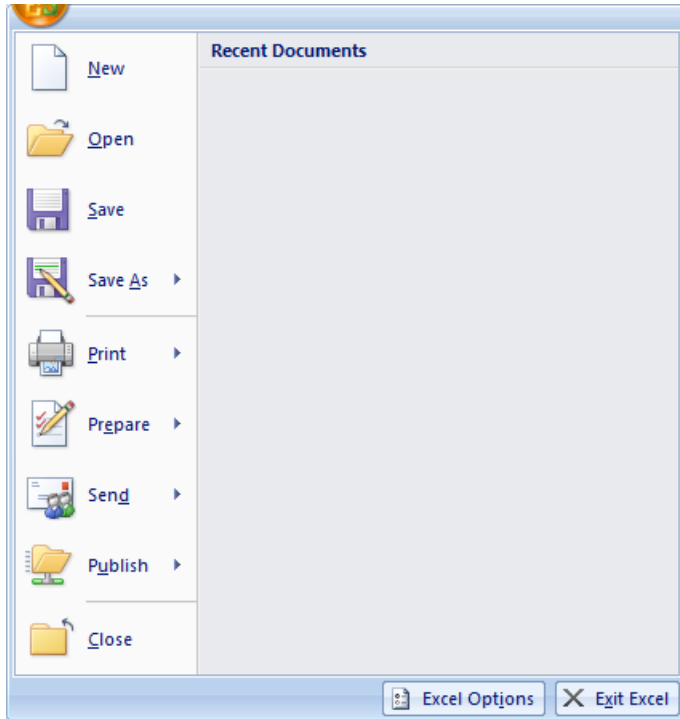
4. When you press *OK*, STATGRAPHICS will be added to the Excel menu:



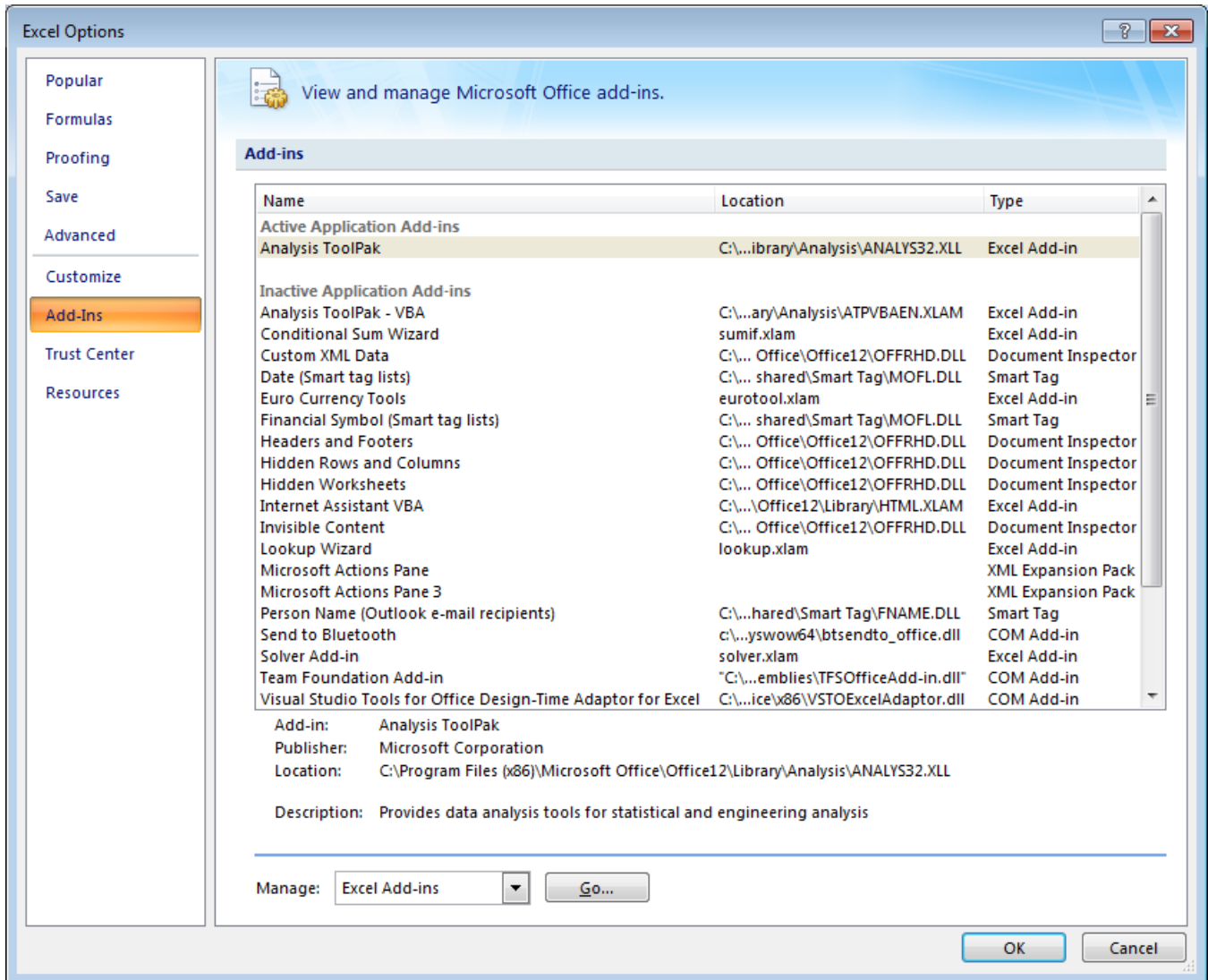
## Instructions for Excel 2007

If you are using Excel 2007, first start Excel. Then:

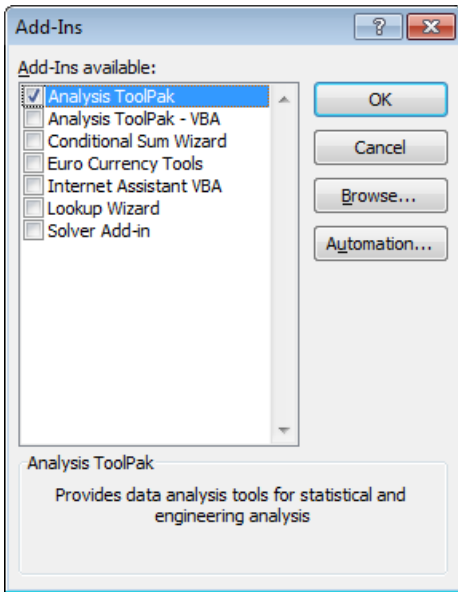
1. Press the Microsoft Office button at the top left corner of the Excel window. This will display the dialog box shown below:



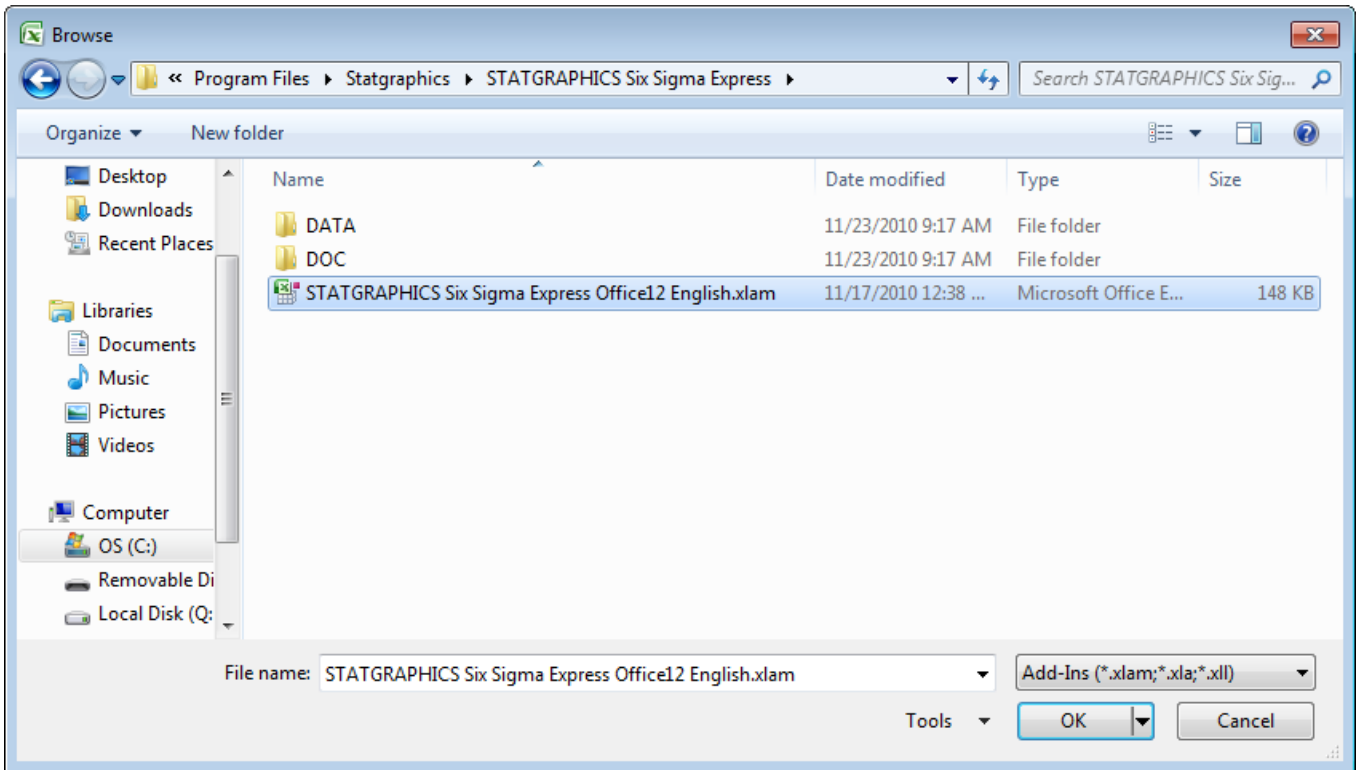
2. Press the *Excel Options* button to display a second dialog box.
3. When the second dialog box appears, click on the *Add-Ins* tab. The dialog box will then look similar to that shown below:



4. At the bottom of the dialog box, be sure that the setting in the *Manage* field is *Excel Add-ins*. Press the *Go* button to display a list of all currently installed add-ins:



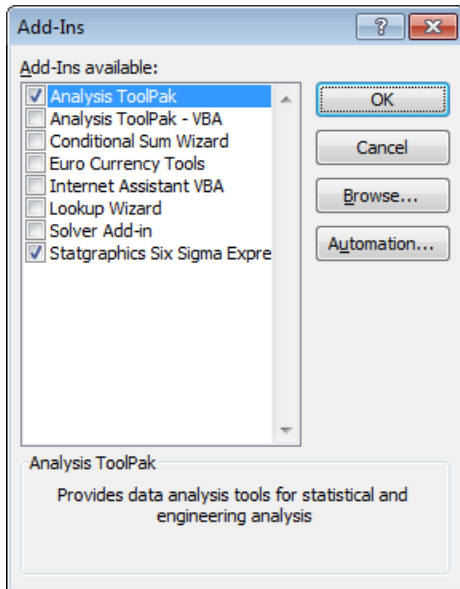
5. Press *Browse* to display a file selection dialog box:



Locate the XLAM file that was created when you installed STATGRAPHICS Sigma *express*. If you are using a 32-bit version of Windows, the file will usually be located in the directory named "c:\Program Files\Statgraphics\STATGRAPHICS Sigma *express*". If you are using a 64-bit version of Windows, the file will usually be located in the

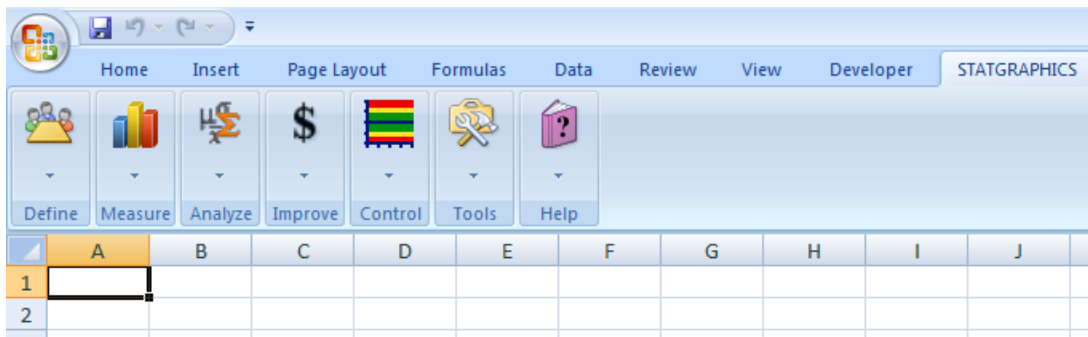
directory named "c:\Program Files (x32)\Statgraphics\STATGRAPHICS Sigma *express*".

6. When you press OK, STATGRAPHICS will be added to the list of add-ins:



Be sure that it has a checkmark next to it.

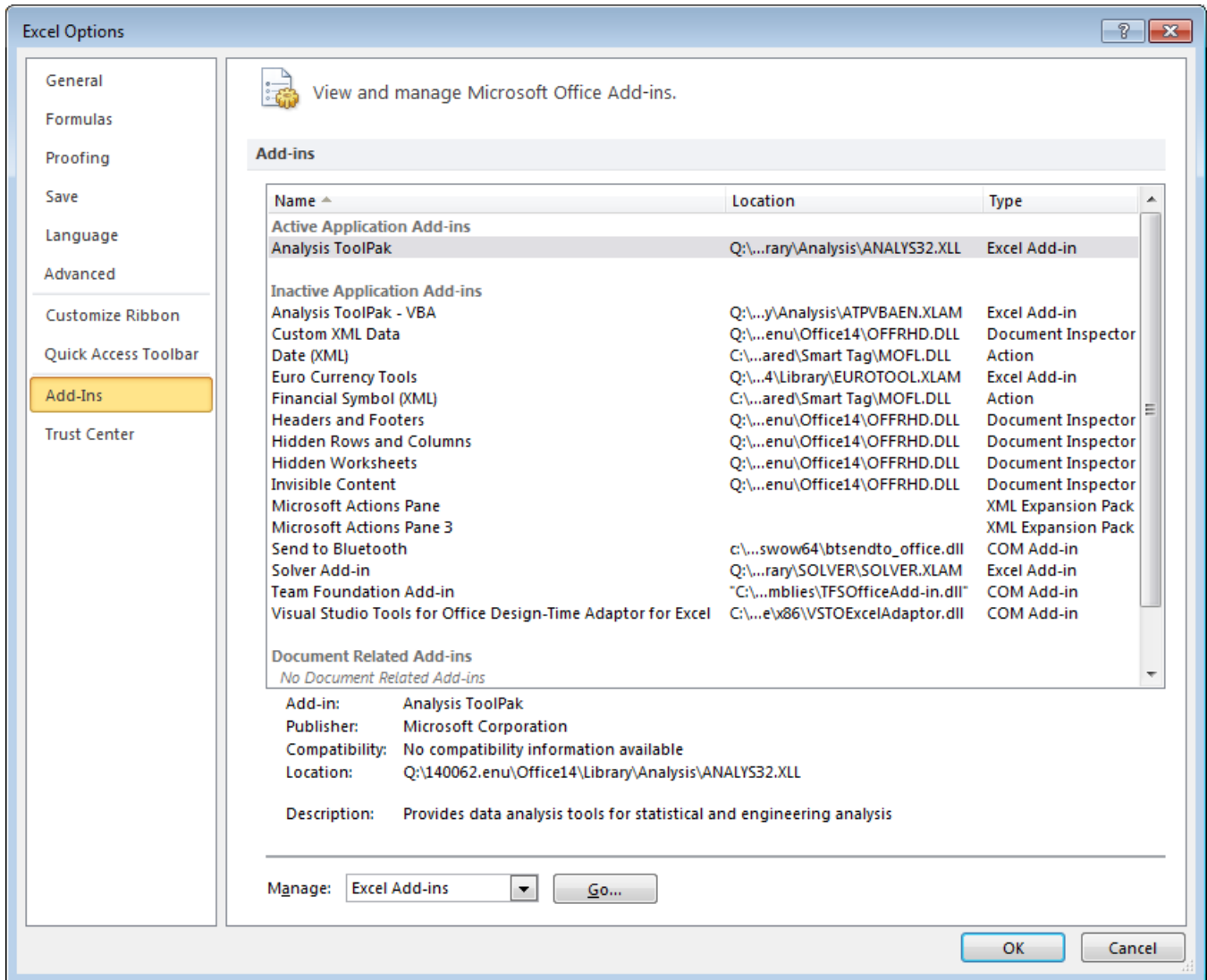
7. When you press *OK*, STATGRAPHICS will be added to the Excel menu:



## Instructions for Excel 2010, 2013 and 2016

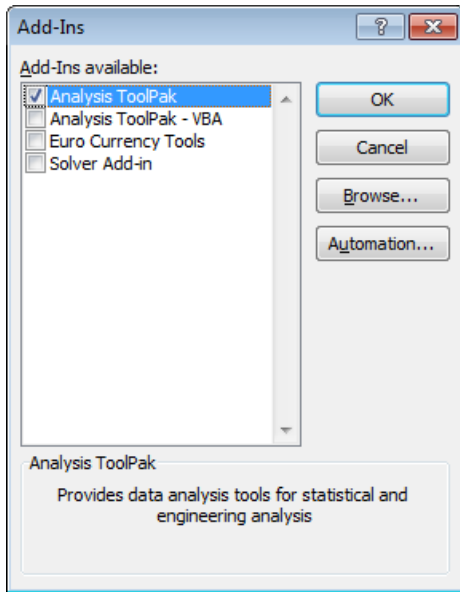
If you are using Excel 2010, 2013 or 2016, first start Excel. Then:

1. Select *File - Options* from the Excel menu.
2. When the dialog box appears, click on the *Add-Ins* tab. The dialog box will be similar to that shown below:

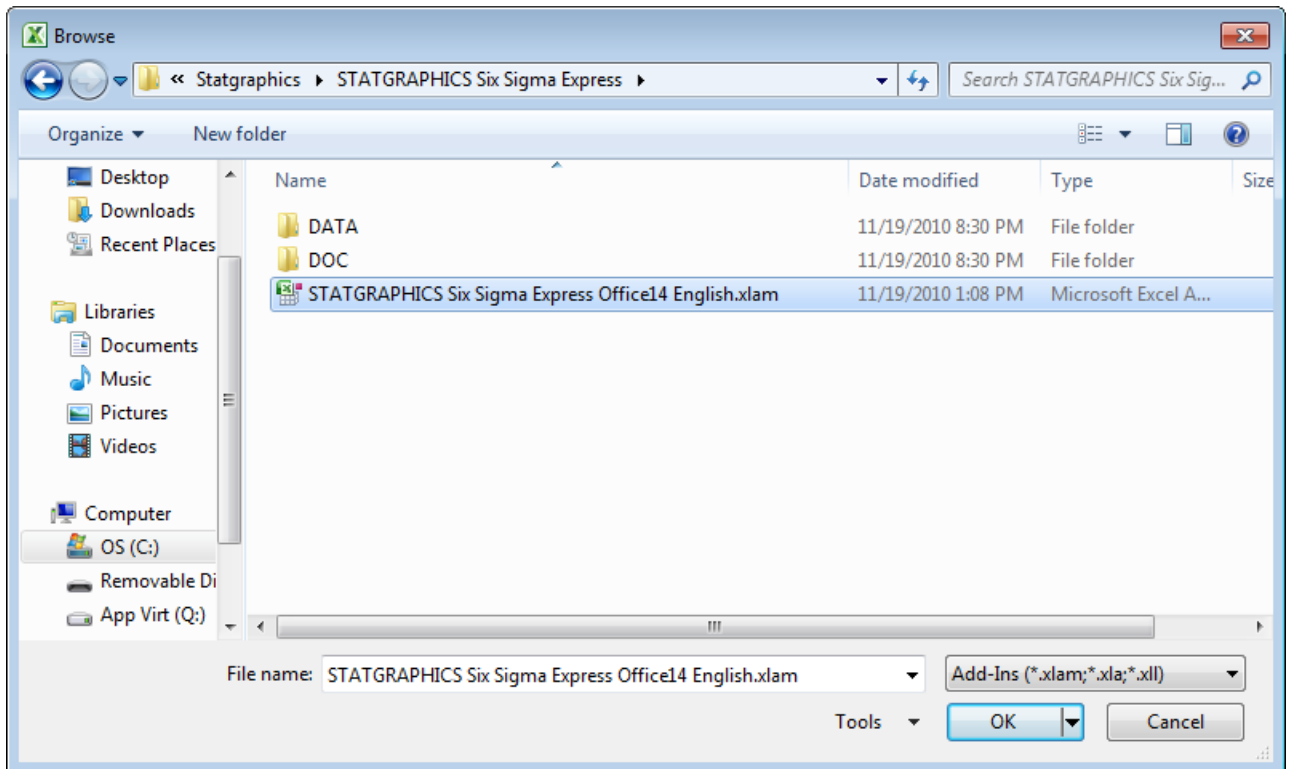


3. At the bottom of the dialog box, be sure that the setting in the *Manage* field is *Excel Add-ins*. Press the *Go* button to display a list of all currently installed add-ins:





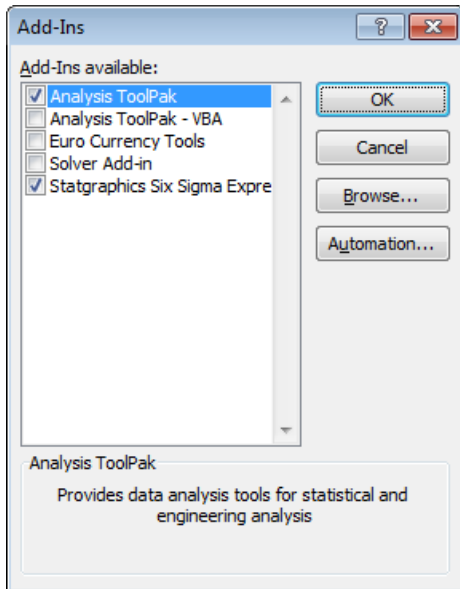
4. Press *Browse* to display a file selection dialog box:



Locate the XLAM file that was created when you installed STATGRAPHICS Sigma *express*. If you are using a 32-bit version of Windows, the file will usually be located in the directory named "c:\Program Files\Statgraphics\STATGRAPHICS Sigma *express*". If you are using a 64-bit version of Windows, the file will usually be located in the

directory named "c:\Program Files (x32)\Statgraphics\STATGRAPHICS Sigma *express*".

5. When you press OK, STATGRAPHICS will be added to the list of add-ins:



Be sure that it has a checkmark next to it.

6. When you press *OK*, STATGRAPHICS will be added to the Excel menu:

